

# ATELIER

by Monsieur Christian Lacroix

Designer Collection by

**ege**<sup>®</sup>

THE URGE TO EXPLORE SPACE





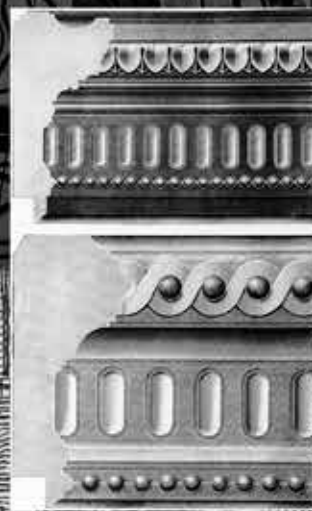


# ATELIER

by Monsieur Christian Lacroix









Like a comforting carpet that has always been in the family home, a lucky pebble carried everywhere in your pocket, a travel book that accompanies you on your journey full of inspiration, notes and discoveries.

WDFW



# CONTENTS

12	Textile
26	Mineral
38	Gravure
55	Collection overview
58	Colour palettes
59	Recolour options
60	Technical specifications
62	All the details
64	Custom design

# TEXTILE

The carpet is as much an item of clothing as it is a covering. It adorns the floor in the way a wallpaper adorns the walls, or a fabric dresses the body. So it seems obvious to me to treat the opening theme of this first collaboration with ege as a collection of fabrics. A collection of historical textiles, timeless from ages past and different kinds of cultures, and always an endless inspiration to me. Traditional cashmeres, ethnic fabrics embroidered with sequins in a trompe-l'oeil effect and beautiful weaved folk ribbons. All coordinated with more quiet monochrome patterns; a draped effect in ruffled velvet, herringbone or friezes as well as more plain, textured effects, in warm and cold colour palettes dominated by blues, gold and ancient reds.









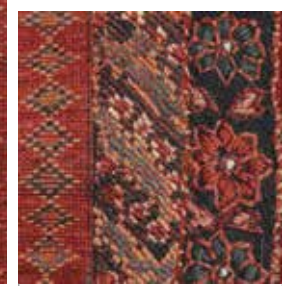
400 cm

Approx. 100 cm

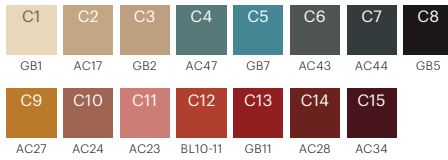
C1	C2	C3	C4	C5	C6	C7	C8	C9	C10	C11	C12	C13	C14	C15
GB1	AC17	GB2	AC47	GB7	AC43	AC44	GB5	AC27	AC24	AC23	BL10-11	GB11	AC28	AC34



RF52752718 PERSE RUNNER K5275  
w: 130 cm x l: 390.1 cm Background RF52752715



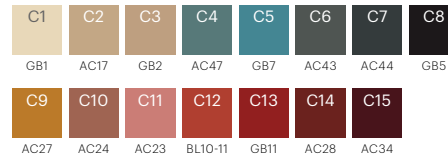
Approx. 100 cm



RF52752717 PERSE CORRIDOR K5275  
w: 195.1 cm x l: 390.1 cm Background RF52752715



Approx. 100 cm



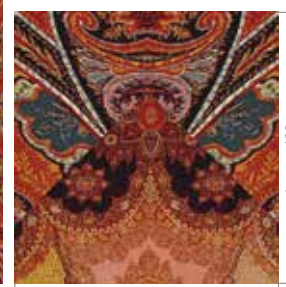
RF52752715 TOILE K5275  
w: 195.1 cm x l: 195.1 cm



Approx. 100 cm



400 cm



400 cm

Approx. 100 cm

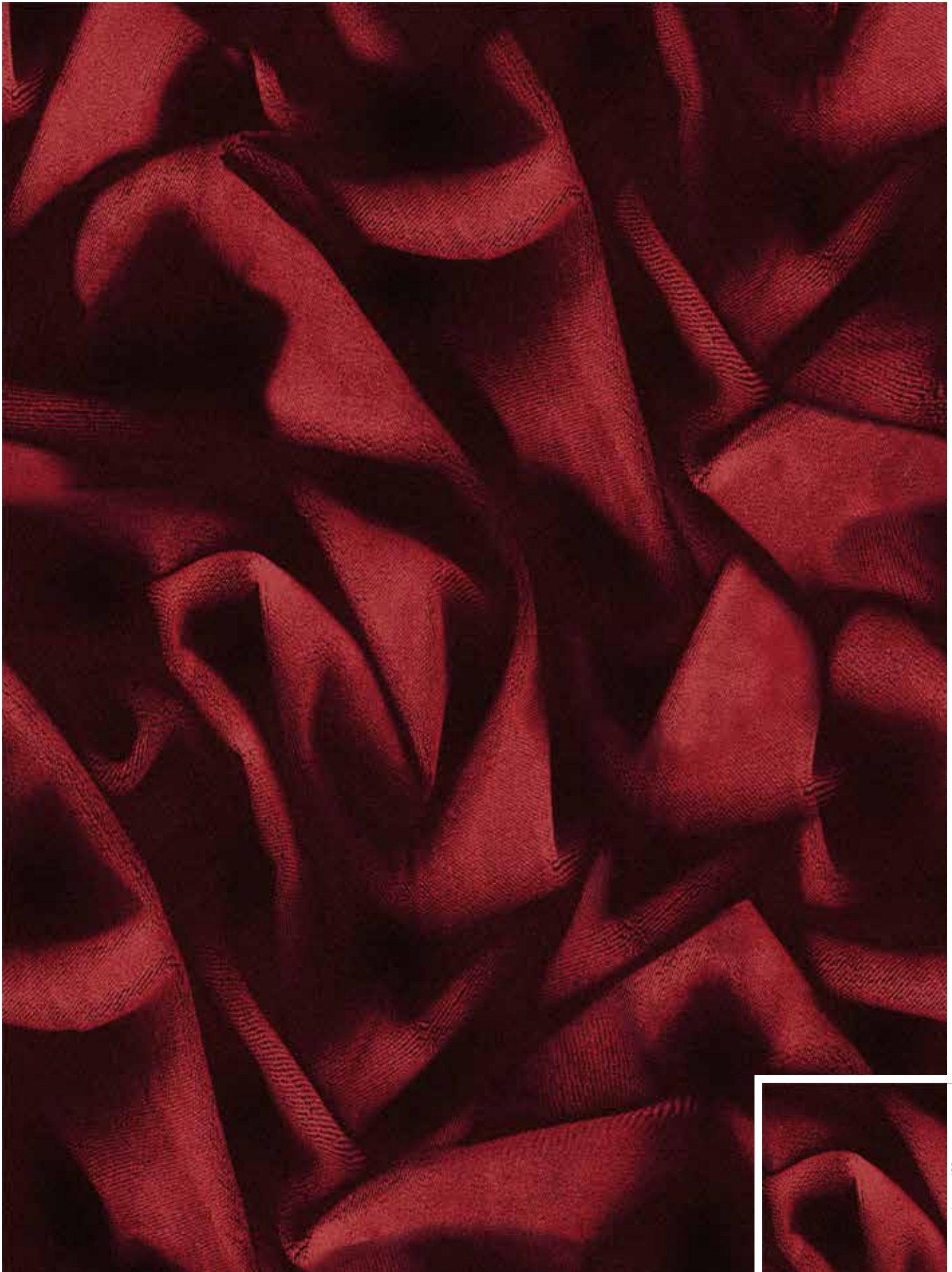
C1	C2	C3	C4	C5	C6	C7	C8	C9	C10	C11	C12	C13	C14	C15	C16	C17	C18
GB5	AC44	AC42	GB7	AC47	GB12	AC28	GB11	AC26	AC27	AC23	AC18	GB8	AC22	GB2	AC17	GB1	NONE

FLOORSCAPE INSPIRATION



RF5500700 VELOURS  
w: 390.1 cm x l: 576.3 cm

K5500



400 cm

Approx. 100 cm

Approx. 100 cm





RF52952678 RUBAN  
w: 195.1 cm x l: 211.1 cm

K5295



400 cm

Approx. 100 cm



RF52952693 TOILE  
w: 195.1 cm x l: 195.1 cm

K5295



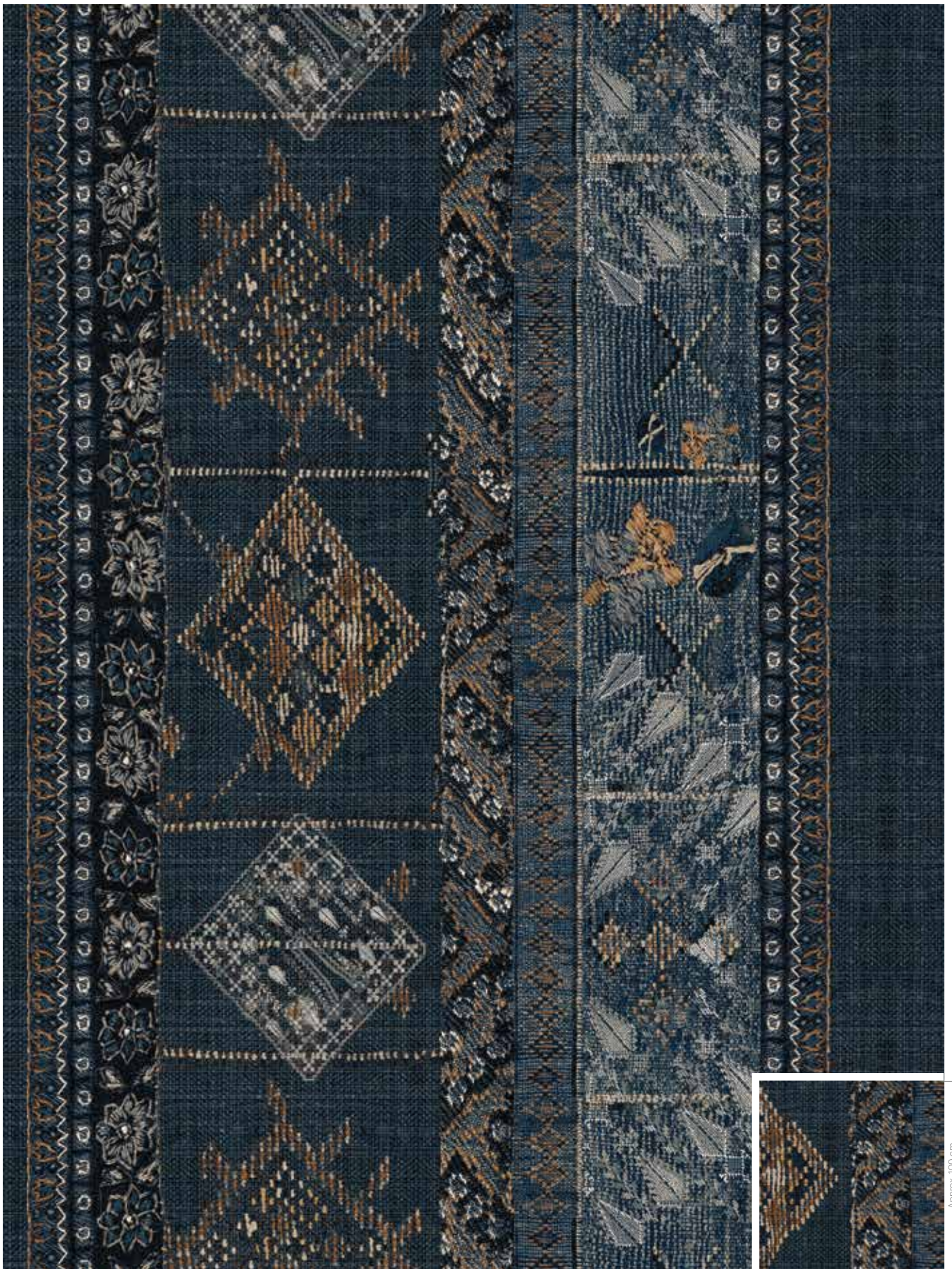
400 cm

Approx. 100 cm



RF52952692 INDIENNE - ROOM LEFT w: 400 cm x l: 3901 cm  
 RF52952691 INDIENNE - ROOM RIGHT w: 400 cm x l: 3901 cm

Background RF52952693 K5295  
 Background RF52952693 K5295



400 cm

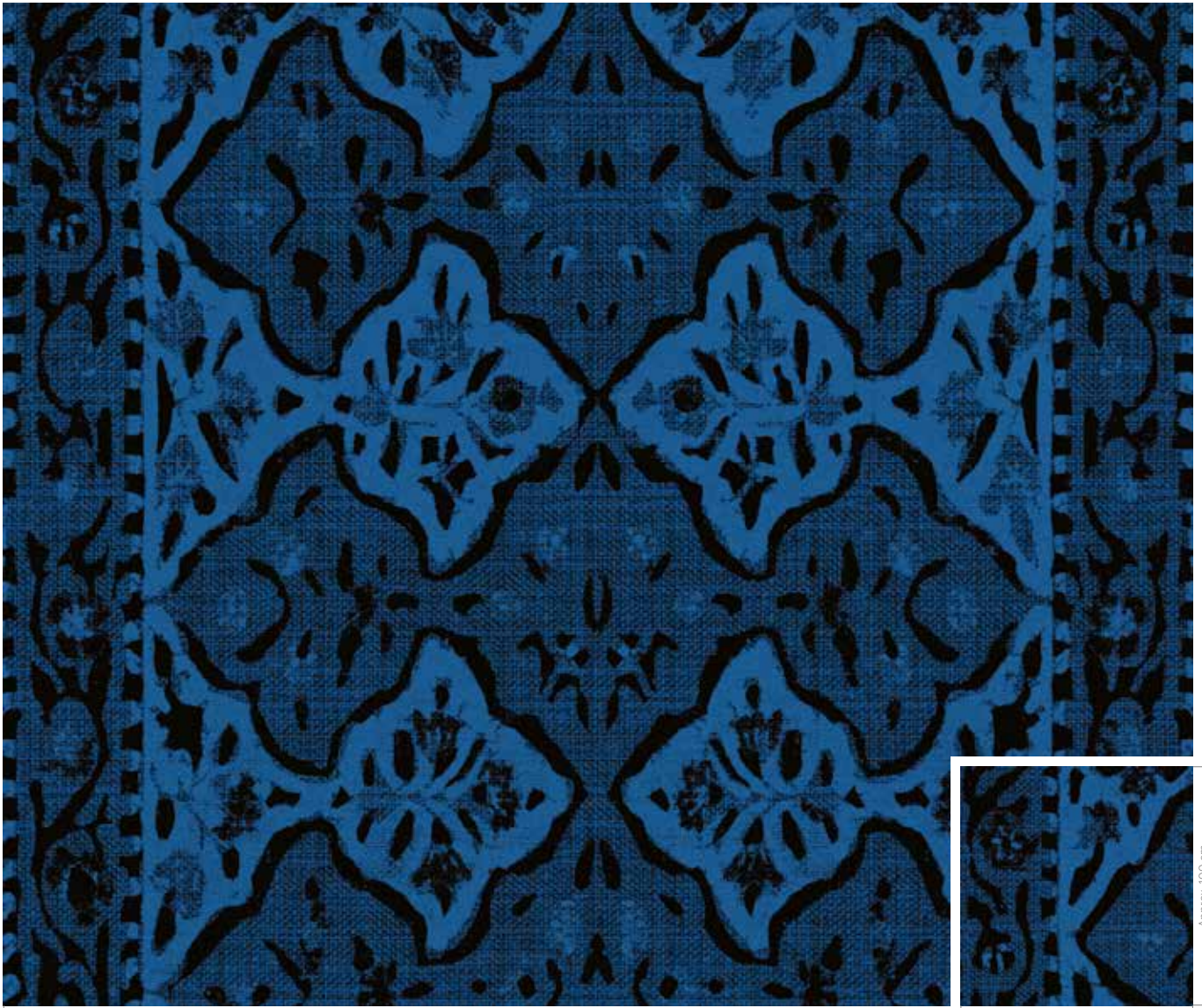
Approx. 100 cm

Approx. 100 cm

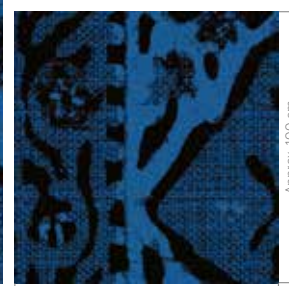
C1	C2	C3	C4	C5	C6	C7	C8	C9	C10	C11	C12	C13
NONE	GB1	AC13	GB2	AC18	GB6	GB5	GB4	GB9	AC33	AC40	GB3	AC20

RF52202675 SARI  
w: 390.1 cm x l: 390.1 cm

K5220  
Background RF52202676



400 cm



Approx. 100 cm

Approx. 100 cm



RF52202676 TOILE  
w: 195.1 cm x l: 195.1 cm

K5220



400 cm



Approx. 100 cm

Approx. 100 cm















RF52952680 CALADES  
w: 390.1 cm x l: 390.1 cm

K5295



RF52952681 CALADES II  
w: 130 cm x l: 108 cm

K5295



RF52952683 CALADES RUNNER K5295  
w: 130 cm x l: 106.9 cm Background RF52952684



C1	C2	C3	C4	C5	C6	C7	C8
NONE	GB1	GB9	AC13	GB2	BL2-3	GB3	GB4

RF52952682 CALADES CORRIDOR K5295  
w: 195.1 cm x l: 320.8 cm Background RF52952684



C1	C2	C3	C4	C5	C6	C7	C8
NONE	GB1	GB9	AC13	GB2	BL2-3	GB3	GB4

RF52952684 CHAUSSÉE K5295  
w: 130 cm x l: 106.9 cm



C1	C2	C3	C4
GB1	AC13	GB2	GB3





RF52952686 CARREAUX RUNNER K5295  
w: 130 cm x l: 307.3 cm Background RF52952687

RF52952690 CARREAUX RUNNER END K5295  
w: 130 cm x l: 60.2 cm

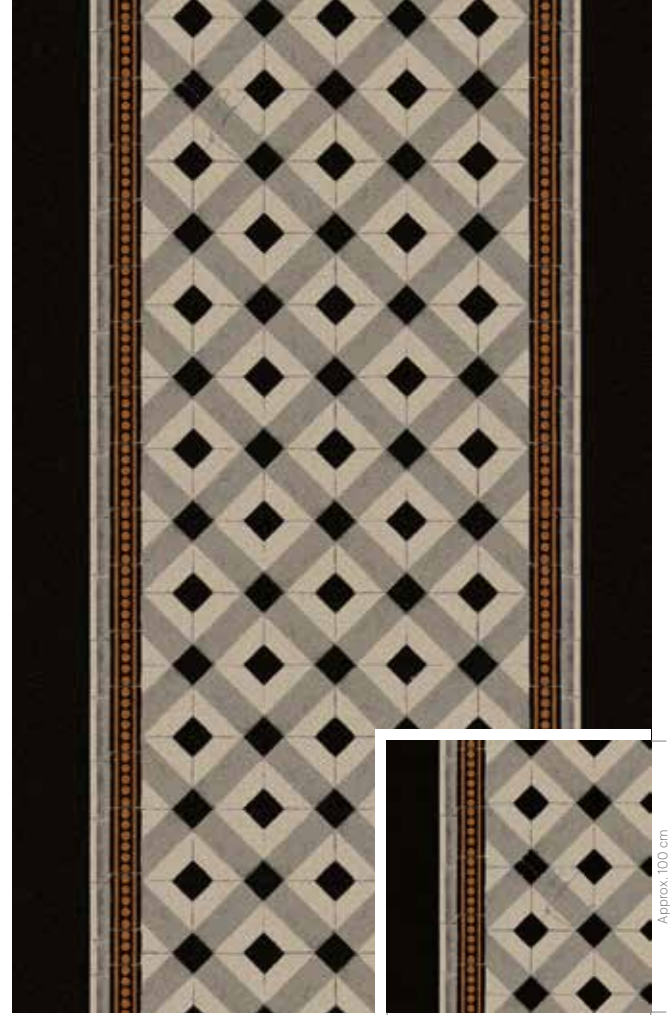
RF52952688 CARREAUX BORDER K5295  
w: 48.8 cm x l: 73.9 cm



RF52952685 CARREAUX CORRIDOR K5295  
w: 195.1 cm x l: 307.3 cm Background RF52952687

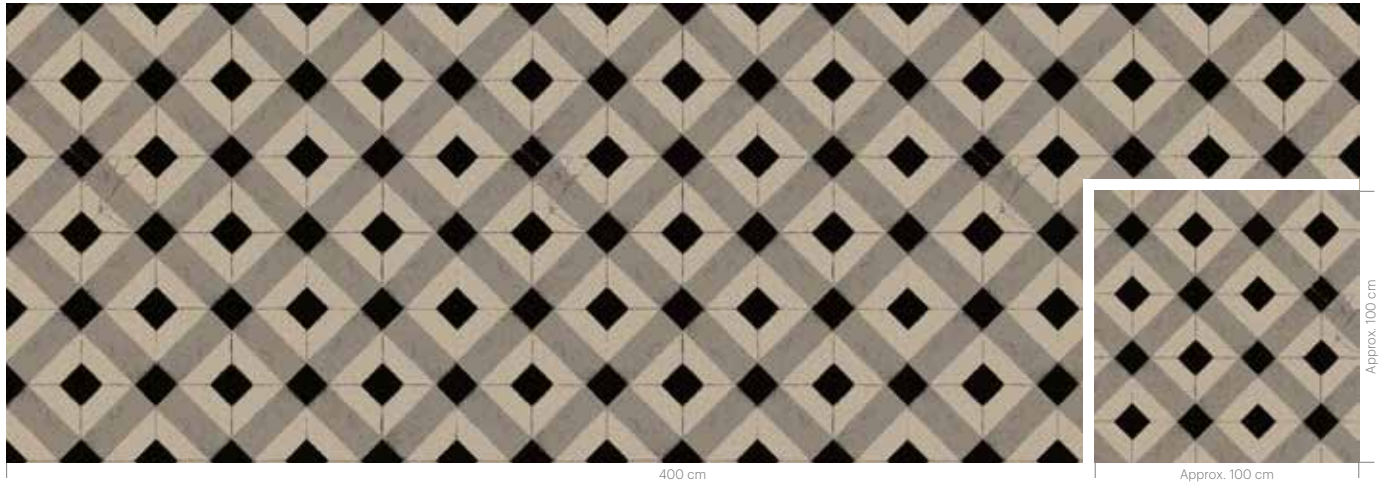
RF52952689 CARREAUX CORRIDOR END K5295  
w: 195.1 cm x l: 81.3 cm

RF52952688 CARREAUX BORDER K5295  
w: 48.8 cm x l: 73.9 cm



RF52952687 CARREAUX  
w: 390.1 cm x l: 307.3 cm

K5295





400 cm

Approx. 100 cm

Approx. 100 cm

C1	C2	C3	C4	C5	C6	C7	C8	C9	C10	C11	C12
GB1	AC13	AC14	GB2	BL6-8	AC23	GB9	AC33	GB10	AC39	AC40	GB4





For me the carpet is a blank canvas upon which to express my passions, drawings, collages, prints in black and white or in colour and albums of old pictures from my personal archives.

LOLITA

# GRAVURE

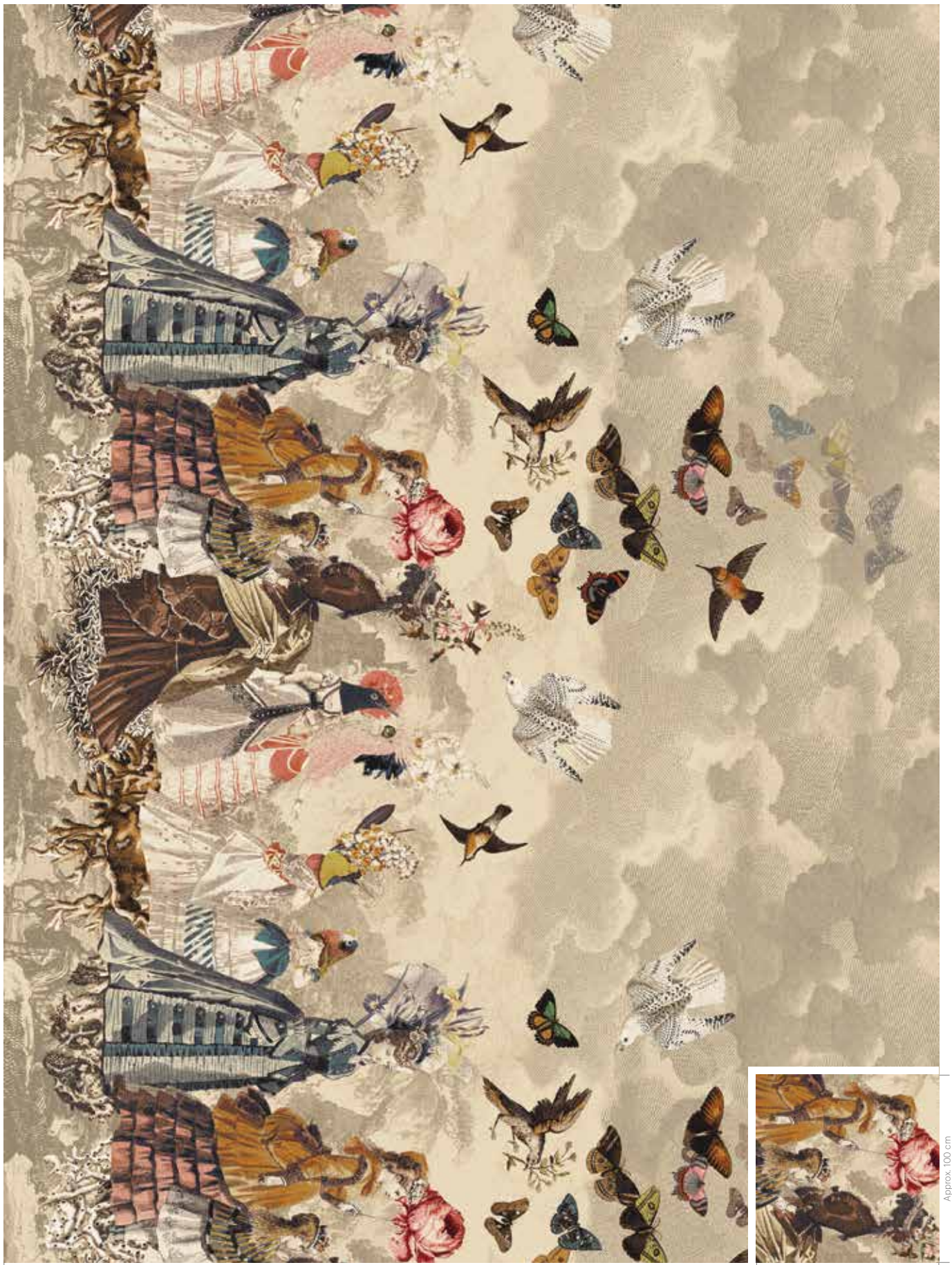
Finally, for me, the carpet is a blank canvas upon which to express my passions, drawings, collages, prints in black and white or in colour and albums of old pictures from my personal archives.

For this third theme, the carpet is adorned with a collection of etchings of an imaginary landscape freely inspired by a Provençal town or lush Mediterranean hills, a scrapbook containing a patchwork of 19th century fashion and flights of butterflies, abstract sketches or graffiti, and streaks of ink to complete the cloud motifs.



RF52752705 PAPILLONS - ROOM LEFT w: 400 cm x l: 585.2 cm  
 RF52752706 PAPILLONS - ROOM RIGHT w: 400 cm x l: 585.2 cm

Background RF52752707 K5275  
 Background RF52752707 K5275



400 cm

Approx. 100 cm

Approx. 100 cm

C1	C2	C3	C4	C5	C6	C7	C8	C9	C10	C11	C12	C13	C14	C15	C16	C17	C18	C19	C20	C21	C22	C23	C24	C25	C26
AC16	AC17	GB1	GB3	GB5	GB12	GB4	AC25	GB11	BL9-11	AC24	AC27	GB10	AC23	AC39	AC37	AC42	AC38	AC47	AC18	AC22	AC43	NONE	AC33	BL1-10	GB2





400 cm

Approx. 100 cm

C1	C2	C3	C4
GB1	AC17	AC16	GB3

RF52752711 PAPILLONS - ROOM LEFT w: 400 cm x l: 585.2 cm  
 RF52752712 PAPILLONS - ROOM RIGHT w: 400 cm x l: 585.2 cm

Background RF52752713 K5275  
 Background RF52752713 K5275



C1	C2	C3	C4	C5	C6	C7	C8	C9	C10	C11	C12	C13	C14	C15	C16	C17	C18	C19	C20	C21	C22	C23	C24	C25	C26	C27
AC43	GB6	GB5	GB12	GB4	AC25	GB11	BL9-11	AC24	AC27	GB10	AC23	AC39	AC37	AC42	AC38	AC47	AC18	AC22	GB3	AC16	AC17	GB1	NONE	AC33	BL1-7-10	GB2

RF52752708 PAPILLONS - ROOM LEFT w: 400 cm x l: 585.2 cm  
 RF52752709 PAPILLONS - ROOM RIGHT w: 400 cm x l: 585.2 cm

Background RF52752710 K5275  
 Background RF52752710 K5275



C1	C2	C3	C4	C5	C6	C7	C8	C9	C10	C11	C12	C13	C14	C15	C16	C17	C18	C19	C20	C21	C22	C23	C24	C25	C26	C27
GB5	AC46	GB3	AC16	GB12	GB4	AC25	GB11	BL9-11	AC24	AC27	GB10	AC23	AC39	AC37	AC42	AC38	AC47	AC18	AC22	AC43	AC17	GB1	NONE	AC33	BL1-7-10	GB2

RF52952700 PAPILLONS - ROOM LEFT w: 400 cm x l: 585.2 cm  
 RF52952699 PAPILLONS - ROOM RIGHT w: 400 cm x l: 585.2 cm

Background RF52952701 K5295  
 Background RF52952701 K5295



C1	C2	C3	C4	C5	C6	C7	C8	C9	C10	C11
GB3	GB2	GB1	AC13	NONE	AC18	GB6	AC19	AC20	GB5	GB12

RF52752713 NUAGES  
w: 195.1 cm x l: 195.1 cm

K5275



RF52752710 NUAGES  
w: 195.1 cm x l: 195.1 cm

K5275

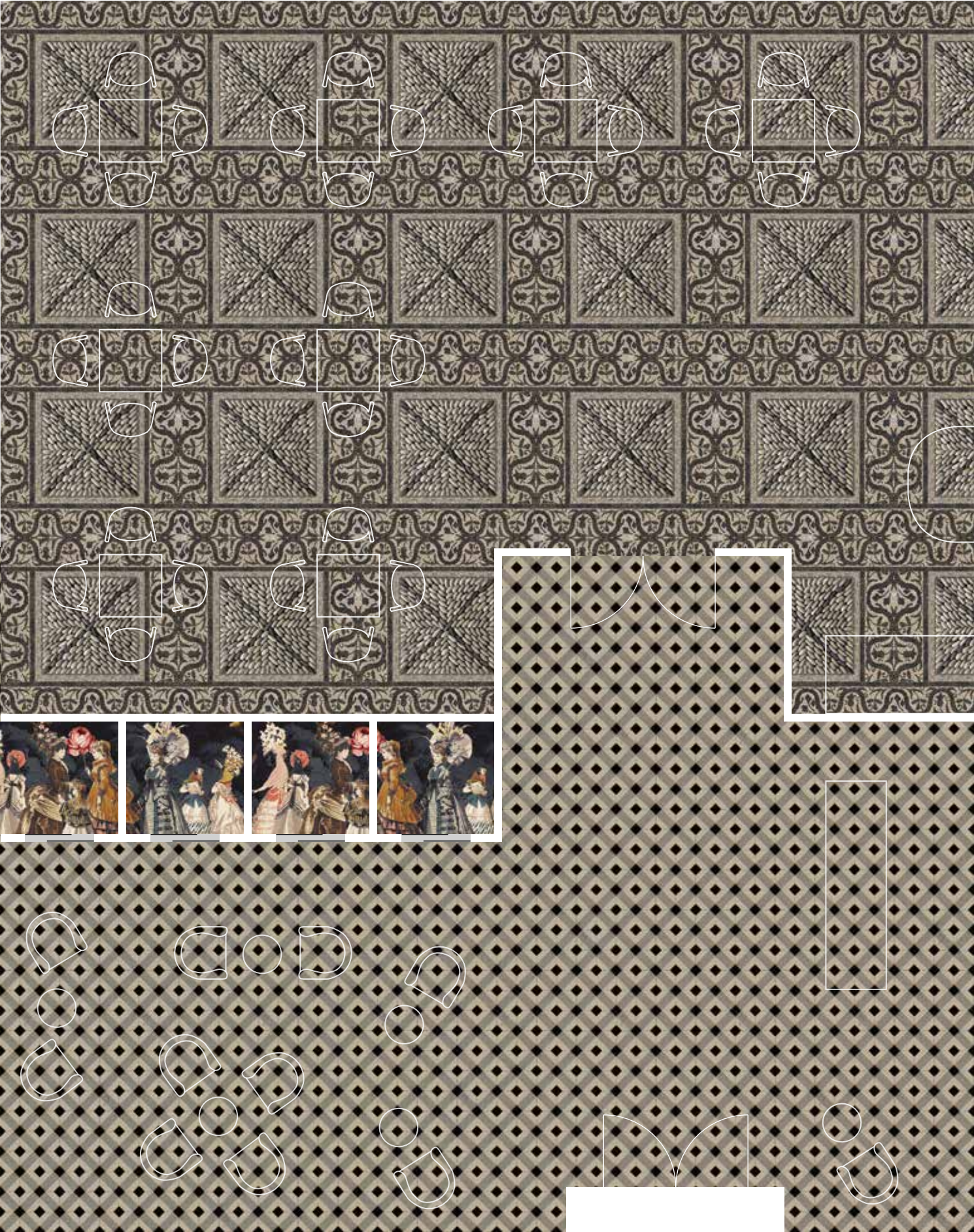


RF52952701 NUAGES  
w: 195.1 cm x l: 195.1 cm

K5295



FLOORSCAPE INSPIRATION









RF52952703 PANORAMA - ROOM LEFT w: 400 cm x l: 780.3 cm  
RF52952702 PANORAMA - ROOM RIGHT w: 400 cm x l: 780.3 cm

Background RF52952704 K5295  
Background RF52952704 K5295

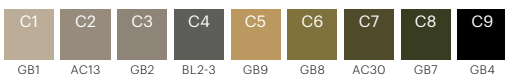


400 cm



Approx. 100 cm

Approx. 100 cm





RF52952704 NUAGES  
w: 195.1 cm x l: 195.1 cm

K5295



400 cm

Approx. 100 cm

C1	C2	C3	C4
GB1	GB9	GB2	BL2-3

RF52952697 NUAGES CORRIDOR  
w: 195.1 cm x l: 195.1 cm

K5295



RF52952698 NUAGES RUNNER  
w: 130 cm x l: 195.1 cm

K5295



RF52952696 NUAGES  
w: 195.1 cm x l: 195.1 cm

K5295



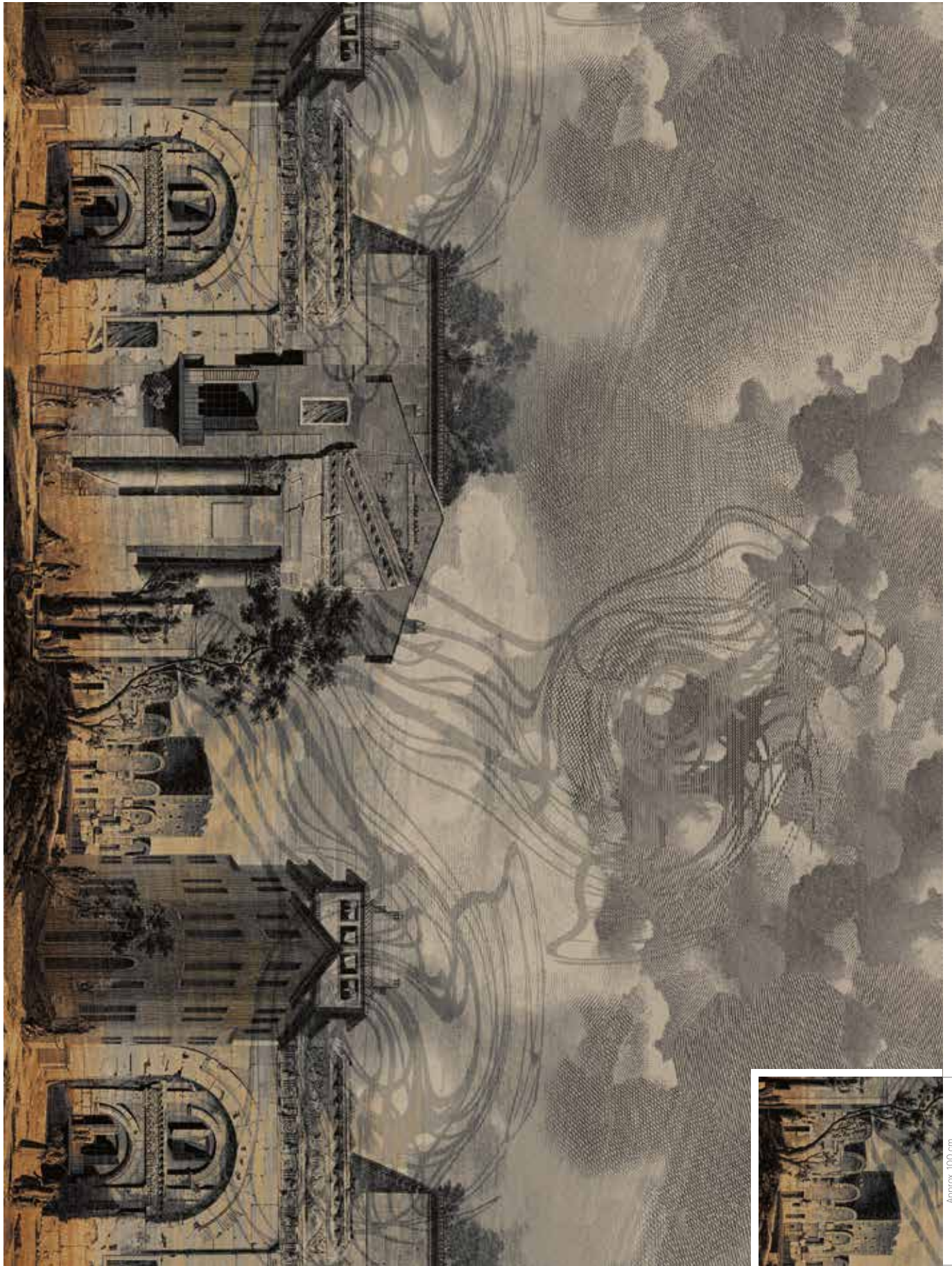


RF52952694 FORUM - ROOM LEFT  
RF52952695 FORUM - ROOM RIGHT

w: 400 cm x l: 390.1 cm  
w: 400 cm x l: 390.1 cm

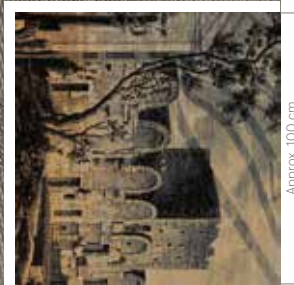
Background RF52952696  
Background RF52952696

K5295  
K5295



400 cm

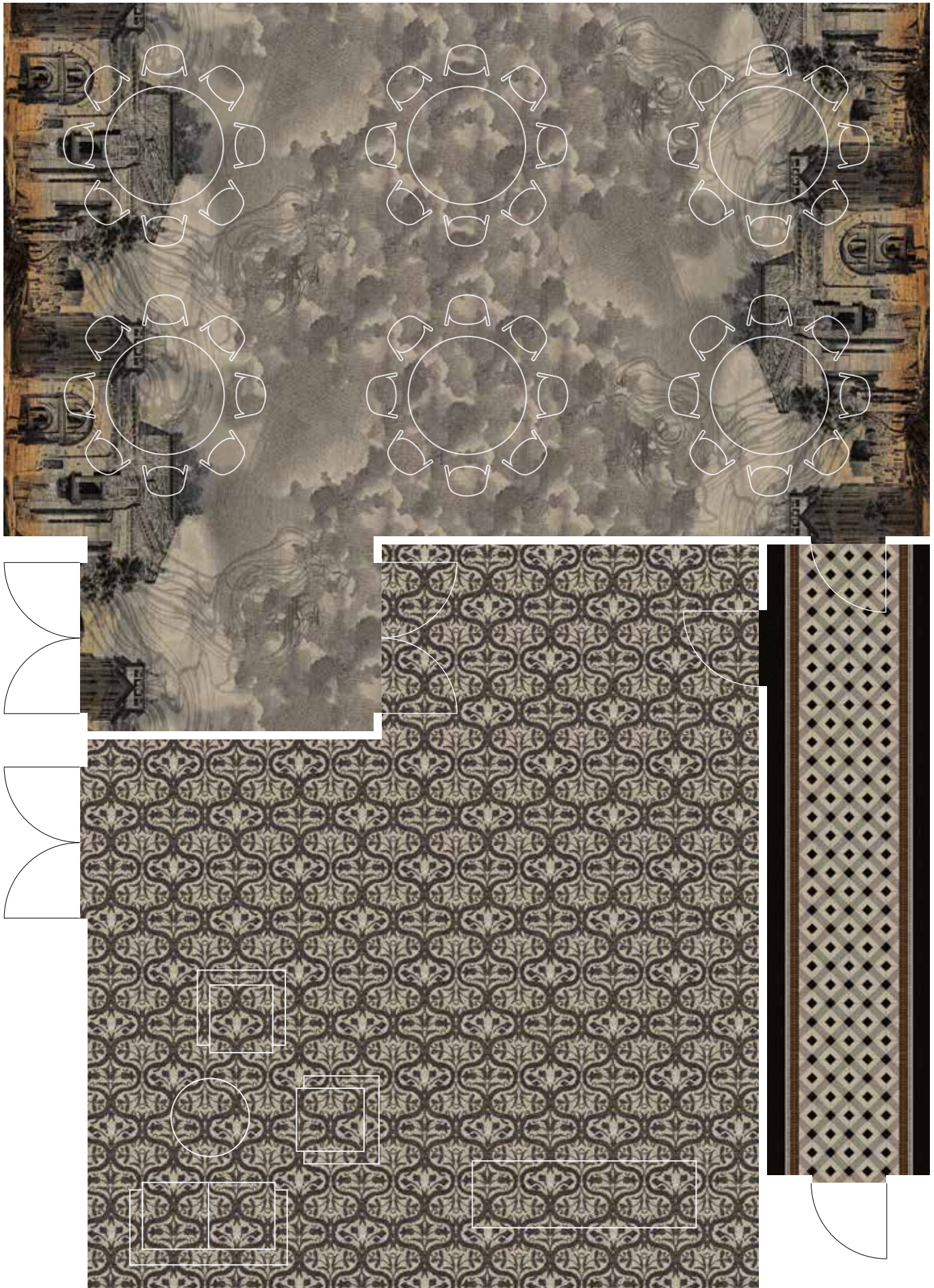
Approx. 100 cm



Approx. 100 cm



# FLOORSCAPE INSPIRATION







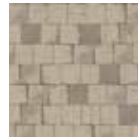






# COLLECTION OVERVIEW








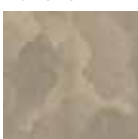

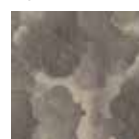
## textile

<p>PERSE</p>  <p>RF52752714 Page 16</p>	<p>TOILE</p>  <p>RF52752715 Page 17</p>	<p>PERSE CORRIDOR</p>  <p>RF52752717 Page 17</p>	<p>PERSE RUNNER</p>  <p>RF52752718 Page 17</p>	<p>CACHEMIRE</p>  <p>RF52752716 Page 18</p>	<p>VELOURS</p>  <p>RF5500700 Page 20</p>	<p>INDIENNE</p>  <p>RL: RF52952692 RR: RF52952691 Page 23</p>	<p>TOILE</p>  <p>RF52952693 Page 22</p>	
<p>RUBAN</p>  <p>RF52952678 Page 22</p>	<p>SARI</p>  <p>RF52202675 Page 24</p>	<p>TOILE</p>  <p>RF52202676 Page 24</p>						

## mineral

<p>CALADES</p>  <p>RF52952680 Page 30</p>	<p>CALADES II</p>  <p>RF52952681 Page 30</p>	<p>CALADES CORRIDOR</p>  <p>RF52952682 Page 31</p>	<p>CALADES RUNNER</p>  <p>RF52952683 Page 31</p>	<p>CHAUSSÉE</p>  <p>RF52952684 Page 31</p>	<p>CARREAUX</p>  <p>RF52952687 Page 33</p>	<p>CARREAUX CORRIDOR</p>  <p>RF52952685 Page 33</p>	<p>CARREAUX RUNNER</p>  <p>RF52952686 Page 33</p>
<p>ROCHES</p>  <p>RF52952679 Page 34</p>							

## gravure

<p>PAPILLONS</p>  <p>RL: RF52752705 RR: RF52752706 Page 40</p>	<p>NUAGES</p>  <p>RF52752707 Page 41</p>	<p>PAPILLONS</p>  <p>RL: RF52752711 RR: RF52752712 Page 42</p>	<p>NUAGES</p>  <p>RF52752713 Page 43</p>	<p>PAPILLONS</p>  <p>RL: RF52752708 RR: RF52752709 Page 42</p>	<p>NUAGES</p>  <p>RF52752710 Page 43</p>	<p>PAPILLONS</p>  <p>RL: RF52952700 RR: RF52952699 Page 42</p>	<p>NUAGES</p>  <p>RF52952701 Page 43</p>
<p>PANORAMA</p>  <p>RL: RF52952703 RR: RF52952702 Page 48</p>	<p>NUAGES</p>  <p>RF52952704 Page 49</p>	<p>FORUM</p>  <p>RL: RF52952694 RR: RF52952695 Page 52</p>	<p>NUAGES</p>  <p>RF52952696 Page 50</p>	<p>NUAGES CORRIDOR</p>  <p>RF52952697 Page 50</p>	<p>NUAGES RUNNER</p>  <p>RF52952698 Page 50</p>		

RL = ROOM LEFT  
RR = ROOM RIGHT



1

2

5

6

7





3

4

# STANDARD COLOUR PALETTES

All designs are developed in one of four standard colour palettes as listed below. Each palette has 12 solid base colours (GB1-12) including a large number of accent colours (AC).

**K5500** BASE COLOUR PALETTE

GB1 K40501	GB2 K40502	GB3 K40503	GB4 K40504
GB5 K40505	GB6 K40506	GB7 K40507	GB8 K40508
GB9 K40509	GB10 K40510	GB11 K40511	GB12 K40512

**K5500** ACCENT COLOURS for use in areas of max. 50 x 50 cm

AC13	AC14	AC15	AC16	AC17	AC48	AC49	AC50	AC51	AC52
AC18	AC19	AC20	AC21	AC22	AC53	AC54	AC55	AC56	AC57
AC23	AC24	AC25	AC26	AC27	AC58	AC59	AC60	AC61	AC62
AC28	AC29	AC30	AC31	AC32	AC63	AC64	AC65	AC66	AC67
AC33	AC34	AC35	AC36	AC37	AC68	AC69	AC70	AC71	AC72
AC38	AC39	AC40	AC41	AC42	AC73	AC74	AC75	AC76	AC77
AC43	AC44	AC45	AC46	AC47					

**K5220** BASE COLOUR PALETTE

GB1 A20041	GB2 A20042	GB3 A20043	GB4 K20044
GB5 K20045	GB6 K20046	GB7 K20047	GB8 K20048
GB9 K20049	GB10 K20050	GB11 K20051	GB12 K20012

**K5220** ACCENT COLOURS for use in areas of max. 50 x 50 cm

AC43	AC44	AC45	AC46	AC47	AC63	AC64	AC65	AC66	AC67
AC48	AC49	AC50	AC51	AC52	AC68	AC69	AC70	AC71	AC72
AC53	AC54	AC55	AC56	AC57	AC73	AC74	AC75	AC76	AC77
AC58	AC59	AC60	AC61	AC62					

**K5275** BASE COLOUR PALETTE

GB1 K28328	GB2 K28329	GB3 K28378	GB4 K28374
GB5 K28366	GB6 K28364	GB7 K28380	GB8 K28379
GB9 K27886	GB10 K28360	GB11 K28367	GB12 K28368

**K5275** ACCENT COLOURS for use in areas of max. 50 x 50 cm

AC13	AC14	AC15	AC16	AC17	AC33	AC34	AC35	AC36	AC37
AC18	AC19	AC20	AC21	AC22	AC38	AC39	AC40	AC41	AC42
AC23	AC24	AC25	AC26	AC27	AC43	AC44	AC45	AC46	AC47
AC28	AC29	AC30	AC31	AC32					

**K5295** BASE COLOUR PALETTE

GB1 K28601	GB2 K28602	GB3 K28603	GB4 K20012
GB5 H28605	GB6 K28606	GB7 K28607	GB8 K28608
GB9 K28609	GB10 K28610	GB11 H28611	GB12 H28632

**K5295** ACCENT COLOURS for use in areas of max. 50 x 50 cm

AC13	AC14	AC15	AC16	AC17	AC33	AC34	AC35	AC36	AC37
AC18	AC19	AC20	AC21	AC22	AC38	AC39	AC40	AC41	AC42
AC23	AC24	AC25	AC26	AC27	AC43	AC44	AC45	AC46	AC47
AC28	AC29	AC30	AC31	AC32					

# RECOLOUR STEPS

## SELECT DESIGN

RF52952678



## CHANGE COLOUR OF BACKGROUND

Choose between GB1-12 and in areas of max. 50 x 50 cm also choose accent colours

EF42972-103



## CHANGE PATTERN COLOUR

Choose between GB1-12 and accent colours from the same colour palette as used for background

EF42972-100



Construction characteristics	Standard	Highline 80/20 1900 WT	Highline 80/20 1400 WT	Highline 80/20 1100 WT	
Structure	ISO 2424	Tufted cut pile	Tufted cut pile	Tufted cut pile	
Pile material	DIR 96/73, 96/74	80% wool, 20% polyamide	80% wool, 20% polyamide	80% wool, 20% polyamide	
Coloration	-	Millitron dyed	Millitron dyed	Millitron dyed	
Backing	eTL	WT - Woven textile	WT - Woven textile	WT - Woven textile	
Dimensions	ISO 3018	Approx. 400 cm	Approx. 400 cm	Approx. 400 cm	
Gauge	ISO 2424	1/8	1/8	1/8	
Total thickness	ISO 1765	Approx. 10.0 mm	Approx. 8.5 mm	Approx. 8.0 mm	
Surface pile thickness	ISO 1766	Approx. 7.5 mm	Approx. 6.0 mm	Approx. 5.5 mm	
Tufts	ISO 1763	Approx. 167,000 per m <sup>2</sup>	Approx. 137,000 per m <sup>2</sup>	Approx. 120,000 per m <sup>2</sup>	
Total carpet weight	ISO 8543	Approx. 3,350 g/m <sup>2</sup>	Approx. 2,900 g/m <sup>2</sup>	Approx. 2,600 g/m <sup>2</sup>	
Pile yarn weight	eTL	Approx. 1,900 g/m <sup>2</sup>	Approx. 1,400 g/m <sup>2</sup>	Approx. 1,100 g/m <sup>2</sup>	
Surface pile density	ISO 8543	Approx. 0.200 g/cm <sup>3</sup>	Approx. 0.170 g/cm <sup>3</sup>	Approx. 0.150 g/cm <sup>3</sup>	
Soil protection	eTL	Yes	Yes	Yes	
Biocidal treatment	Biocidal Product Regulation	Contains a preservative to control microbiological deterioration	Contains a preservative to control microbiological deterioration	Contains a preservative to control microbiological deterioration	

### Performance characteristics

Performance areas	EN 1307	Class 33 – Commercial – Heavy	Class 33 – Commercial – Heavy	Class 32 – Commercial – General	
Castor chair suitability	EN 985	-	-	-	
Suitability for use on stairs	EN 1963	-	Yes	Yes	
Static control	eTL	Permanently antistatic	Permanently antistatic	Permanently antistatic	
Suitability for under floor heating	eTL	Approx. 0.17 m <sup>2</sup> /K/W	Approx. 0.15 m <sup>2</sup> /K/W	Approx. 0.14 m <sup>2</sup> /K/W	
Acoustical insulation from impact noise	ISO 717-2/eTL	29 dB	31 dB	27 dB	
Acoustical absorption	ISO 354/eTL	0.30 aW	0.25 aW	0.25 aW	

### Safety and environmental characteristics

Fire classifications	EN 13501-1 Euroclass IMO MK Godkendelse VKF/AEAI	C <sub>fl</sub> -s1 - Approved Approved	B <sub>fl</sub> -s1 Certified Approved Approved	B <sub>fl</sub> -s1 Certified Approved Approved	
Indoor climate	BASTA DIM Certificate Emissions dans l'air intérieur GECA Green Label Plus	Registered No. 006 A+/A+ - Approved	Registered No. 006 A+/A+ - Approved	Registered No. 006 A+/A+ - Approved	
Environmental profile	Bre BREEAM-NOR Byggvarudeklaration Cradle to Cradle Certified™ Environmental Product Declaration LEED	- - - Silver certified - Qualified	- - - Silver certified EPD-EGE-20150234-CBC1-EN Qualified	- - - Silver certified EPD-EGE-20150233-CBC1-EN Qualified	
CE Labeling	EN 14041	Certified	Certified	Certified	

### Manufacturer characteristics

Quality management	ISO 9001	Audited and verified by Bureau Veritas Certification
Environmental management	ISO 14001	Audited and verified by Bureau Veritas Certification
Eco management	EMAS	Audited and verified by Bureau Veritas Certification
Occupational Health & Safety	DS/OHSAS 18001	Audited and verified by Bureau Veritas Certification
Corporate Social Responsibility	DS 49001	Audited and verified by Bureau Veritas Certification
Carpet Recycling UK	Member	carpetrecyclinguk.com

For full technical specifications and installation and maintenance guides see [egecarpets.com](http://egecarpets.com)

	<b>Highline 1100 WT</b>	<b>Highline 910 WT</b>	<b>Highline 750 WT</b>	<b>Highline 630 WT</b>	<b>Highline Carré WT</b>	<b>Highline Loop WT</b>
	Tufted cut pile	Tufted cut pile	Tufted cut pile	Tufted cut pile	Tufted loop pile	Tufted loop pile
	100% regenerated ECONYL® polyamide	100% polyamide	100% polyamide	100% polyamide	100% regenerated ECONYL® polyamide	100% polyamide
	Millitron dyed	Millitron dyed	Millitron dyed	Millitron dyed	Millitron dyed	Millitron dyed
	WT – Woven textile	WT – Woven textile	WT – Woven textile	WT – Woven textile	WT – Woven textile	WT – Woven textile
	Approx. 400 cm	Approx. 400 cm	Approx. 400 cm	Approx. 400 cm	Approx. 400 cm	Approx. 400 cm
	1/8	1/10	1/8	1/10	1/10	1/10
	Approx. 8.3 mm	Approx. 7.5 mm	Approx. 7.0 mm	Approx. 6.5 mm	Approx. 5.5 mm	Approx. 7.0 mm
	Approx. 5.6 mm	Approx. 5.0 mm	Approx. 4.5 mm	Approx. 4.0 mm	Approx. 3.0 mm	Approx. 4.0 mm
	Approx. 197,100 per m <sup>2</sup>	Approx. 222,000 per m <sup>2</sup>	Approx. 127,000 per m <sup>2</sup>	Approx. 230,000 per m <sup>2</sup>	Approx. 173,000 per m <sup>2</sup>	Approx. 153,000 per m <sup>2</sup>
	Approx. 2,550 g/m <sup>2</sup>	Approx. 2,350 g/m <sup>2</sup>	Approx. 2,250 g/m <sup>2</sup>	Approx. 2,050 g/m <sup>2</sup>	Approx. 2,050 g/m <sup>2</sup>	Approx. 2,200 g/m <sup>2</sup>
	Approx. 1,100 g/m <sup>2</sup>	Approx. 910 g/m <sup>2</sup>	Approx. 760 g/m <sup>2</sup>	Approx. 630 g/m <sup>2</sup>	Approx. 440 g/m <sup>2</sup>	Approx. 680 g/m <sup>2</sup>
	Approx. 0.155 g/cm <sup>3</sup>	Approx. 0.150 g/cm <sup>3</sup>	Approx. 0.130 g/cm <sup>3</sup>	Approx. 0.120 g/cm <sup>3</sup>	Approx. 0.100 g/cm <sup>3</sup>	Approx. 0.115 g/cm <sup>3</sup>
	Yes	Yes	Yes	Yes	Yes	Yes
	-	-	-	-	-	-

	Class 33 – Commercial – Heavy	Class 33 – Commercial – Heavy	Class 32 – Commercial – General	Class 33 – Commercial – Heavy	Class 33 – Commercial – Heavy	Class 33 – Commercial – Heavy
	Intensive use	Intensive use	-	Intensive use	Intensive use	Intensive use
	Yes	Yes	-	Yes	Yes	Yes
	Permanently antistatic	Permanently antistatic	Permanently antistatic	Permanently antistatic	Permanently antistatic	Permanently antistatic
	Approx. 0.14 m <sup>2</sup> K/W	Approx. 0.13 m <sup>2</sup> K/W	Approx. 0.12 m <sup>2</sup> K/W	Approx. 0.11 m <sup>2</sup> K/W	Approx. 0.09 m <sup>2</sup> K/W	Approx. 0.12 m <sup>2</sup> K/W
	27 dB	28 dB	26 dB	25 dB	21 dB	24 dB
	0.20 aW	0.20 aW	0.20 aW	0.20 aW	0.20 aW	0.20 aW

	C <sub>fl</sub> -s1 - Approved Approved	C <sub>fl</sub> -s1 - Approved Approved	C <sub>fl</sub> -s1 - Approved Approved	B <sub>fl</sub> -s1 Certified Approved Approved	C <sub>fl</sub> -s1 - Approved Approved	C <sub>fl</sub> -s1 - Approved Approved
	Registered No. 006 A+/A+ Approved Approved	Registered No. 006 A+/A+ Approved Approved	Registered No. 006 A+/A+ Approved Approved	Registered No. 006 A+/A+ Approved Approved	Registered No. 006 A+/A+ Approved Approved	Registered No. 006 A+/A+ Approved Approved
	ENP 434 With WTA backing eBVD with WTA backing Silver certified EPD-EGE-2013103-CBC1-EN Qualified	- With WTA backing - Silver certified EPD-EGE-20150201-CBC1-EN Qualified	ENP 434 With WTA backing - Silver certified EPD-EGE-20150180-CBC1-EN Qualified	ENP 434 With WTA backing - Silver certified EPD-EGE-20150030-CBC1-EN Qualified	- - - Silver certified EPD-EGE-2016001-CCA1-EN -	- - - Silver certified EPD-EGE-20150030-CBC1-EN Qualified
	Certified	Certified	Certified	Certified	Certified	Certified



## ALL THE DETAILS

### Technical specifications

The Atelier collection features three design themes with various patterns in broadloom. Available in all our Highline qualities and with some of the patterns developed specifically for corridors and runners, the collection is perfect for use in almost any interior design project.

- 16 unique designs
- Recolour options (see page 59)
- Broadloom
- 9 standard qualities (see specifications on pages 60-61 and at [egecarpets.com](http://egecarpets.com))
- Woven Textile (WT) as standard backing
- 4 additional backing options (CL, LL, AB, IP)
- No minimum order requirements for WT, CL and AB
- All qualities are tested according to standard EN 1307
- Performance classification to fit any need; heavy commercial use
- 24-hour sample service (sample size 30 cm x 40 cm and 100 cm x 100 cm)
- Dispatch within 2 weeks from receipt of order







Monsieur Christian Lacroix. Born in Arles on 16 May 1951. After studying classical literature and art history in Montpellier, then at the Sorbonne and the Ecole du Louvre, he migrated towards costume design and created his own fashion house in 1987. Since the 1980s, he has put his signature to the costumes and scenography of numerous theatrical, opera and ballet productions. Since 2000, he has also been involved with more industrial design projects: TGV trains, hotels and cinemas.

## CUSTOM DESIGN BY MONSIEUR CHRISTIAN LACROIX

Historical inspirations, vintage and elegant interpretations are at the heart of the work of Monsieur Christian Lacroix. In recent years, he has concentrated on interior design, artistic direction and scenography for theater. He has completed interior design work at several landmark hotels and museums and worked with ege carpets on many projects such as Palais Galliera, Hôtel du Petit Moulin, Hôtel l'Antoine and Hôtel Notre Dame in Paris as well as Musée Réattu and Hôtel Jules César in Arles.

If you would like to have your very own carpet designed by Monsieur Christian Lacroix, please contact us for further information.



Top left: Musée Réattu, Arles, France

Top right: Hôtel Jules César, Arles, France

Bottom: Hôtel Notre Dame, Paris, France





Top left: Monsieur Christian Lacroix

Bottom left and right: Palais Galliera, Paris, France





BY APPOINTMENT TO THE ROYAL DANISH COURT

ege carpets a/s

## THANKS

Monsieur Christian Lacroix, Designer XCLX · Jean Philippe Pons, XCLX · Dimitri Hadjiyannakis, Graphic Designer XCLX · Karen Nybo, Designer ege · Susanne Lykke, Visual Communication Manager ege · Gitte Uhre Karlskov, Graphic Designer ege · Mikkel Mortensen, Photographer Yellows · Lene Ronfeldt, Interior Stylist · Daniel Rouvier, Conservator Musée Réattu · Andy Neyrotti, Attaché of Conservation Musée Réattu · Aldo Bastie, Director Château de Tarascon · Olivier Saillard, Director Palais Galliera



**ege**<sup>®</sup>

THE URGE TO EXPLORE SPACE

[egecarpets.com](http://egecarpets.com)